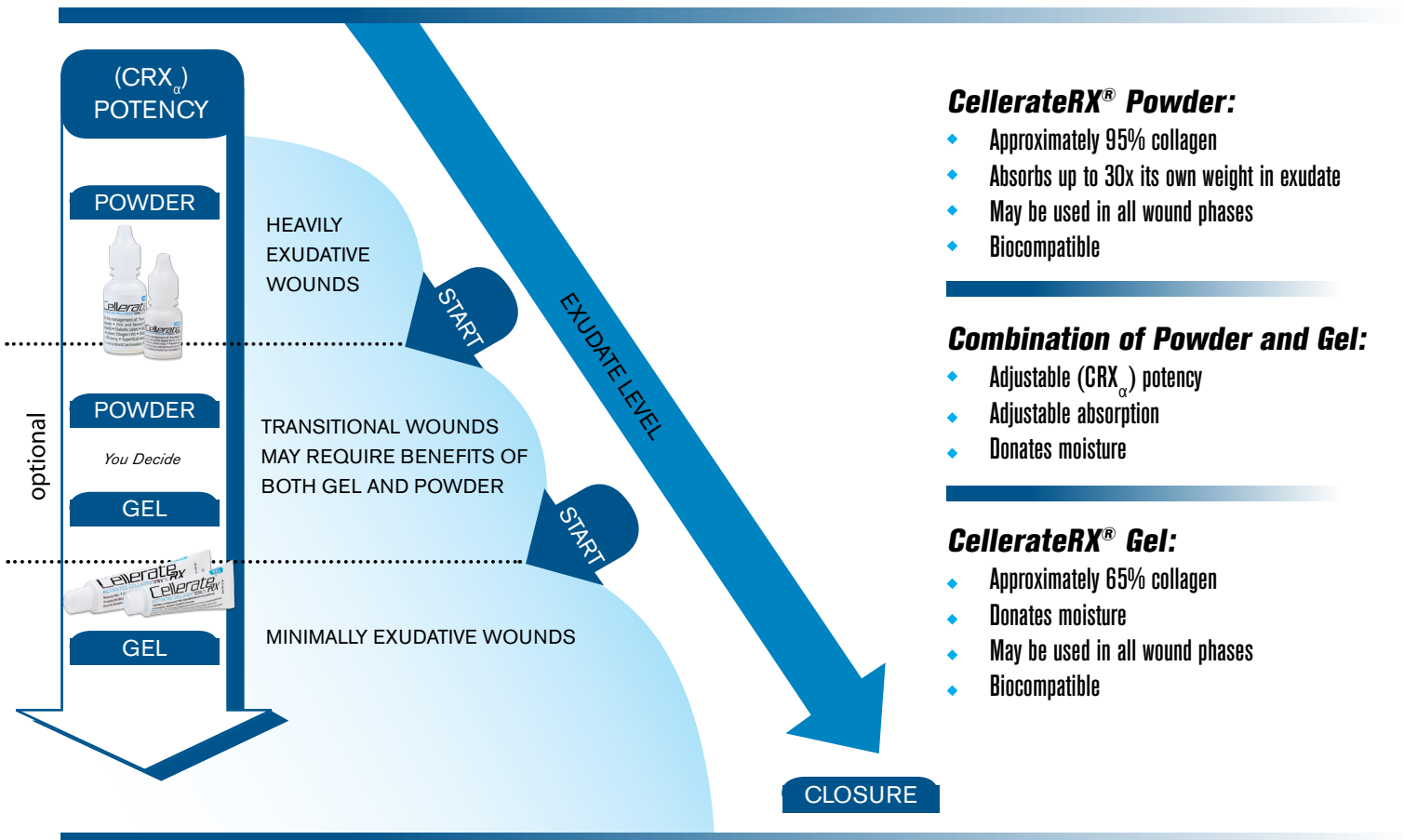


Cellerate[®]_{RX}

ACTIVATED COLLAGEN[®] (CRX_α)
NON-PRESCRIPTION

PRODUCT SELECTION GUIDE

ACTIVATED COLLAGEN (CRX_α) found in CellerateRX is a specific hydrolyzed collagen. Native intact collagen requires time for the body to break it down, delaying the body's ability to use it in the healing process.



CellerateRX[®] Powder:

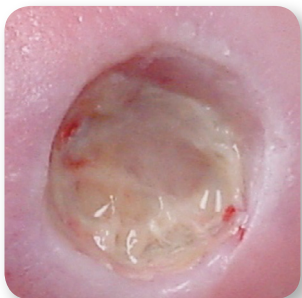
- ◆ Approximately 95% collagen
- ◆ Absorbs up to 30x its own weight in exudate
- ◆ May be used in all wound phases
- ◆ Biocompatible

Combination of Powder and Gel:

- ◆ Adjustable (CRX_α) potency
- ◆ Adjustable absorption
- ◆ Donates moisture

CellerateRX[®] Gel:

- ◆ Approximately 65% collagen
- ◆ Donates moisture
- ◆ May be used in all wound phases
- ◆ Biocompatible



Reapplication with CellerateRX[®]

- ◆ The wound bed may be covered with a gelatinous film after using CellerateRX[®].
- ◆ This gelatinous film is well hydrated collagen and is beneficial to the wound.
- ◆ CellerateRX[®] does not need to be removed from the wound.



facebook.com/CellerateRX

www.celleraterx.com



@CellerateRX

Cellerate[®]_{RX}

ACTIVATED COLLAGEN[®] (CRX_α)
NON-PRESCRIPTION

SUGGESTED PROTOCOL

INITIAL APPLICATION

First time application of CellerateRX[®]:

1. It is recommended that the wound bed be debrided of any necrotic or sloughy fibrotic tissue prior to the application of CellerateRX[®].
2. Apply CellerateRX[®] to the wound. CellerateRX[®] should cover the entire wound bed and the edges of the wound. Cover the CellerateRX[®] and wound bed with a secondary dressing that maintains the optimum moisture level of the wound bed.

REAPPLICATION

Reapplying CellerateRX[®] to the wound (2-3 times per week or as needed):

1. Gently remove secondary dressing from the wound bed. If secondary dressing adheres to wound bed, moisten before removing.
2. It is not necessary to remove CellerateRX[®] (or the gelatinous film if present) from the wound bed.
3. Apply CellerateRX[®] to the wound. CellerateRX[®] should cover the entire wound bed and the edges of the wound. Cover the CellerateRX[®] and wound bed with a secondary dressing that maintains the optimum moisture level of the wound bed.

TUNNELED

Tunneled or Undermined wounds (CellerateRX[®] is ideal for hard to reach wounds):

1. Follow first time application instructions above. CellerateRX[®] gel may be drawn up into a syringe and applied into the tunnel or undermined area via the syringe.
2. On reapplication: the CellerateRX[®] does not need to be removed from the wound.

FLAPS AND GRAFTS

Skin Flaps or Grafts (CellerateRX[®] gel has a tacky nature helps flaps adhere to the body):

1. CellerateRX[®] is applied to the underside of the skin flap and the wound bed, then the skin flap is flipped back onto the wound bed.
2. A transparent film can be placed over the flap and left in place for 2-4 days.

BURNS

Burns (Painful wounds soothed by CellerateRX[®]):

1. Apply CellerateRX[®] to the wound. CellerateRX[®] should cover the entire wound bed and the edges of the wound. Cover the CellerateRX[®] and wound bed with a secondary dressing that maintains the optimum moisture level of the wound bed.
2. Collagen forms an occlusive dressing that reduces pain.



Scan this QR code to download CellerateRX evidence



16633 Dallas Pkwy, Ste 250
Addison, TX 75001-6897
Phone: 800-205-7719
Fax: 866-546-9429

©2015 Wound Care Innovations, LLC
CellerateRX[®] is a trademark of Applied Nutritionals, LLC
Activated Collagen[®] and CRX_α[®] are trademarks of WoundCare Innovations, LLC



CRXPRO1214